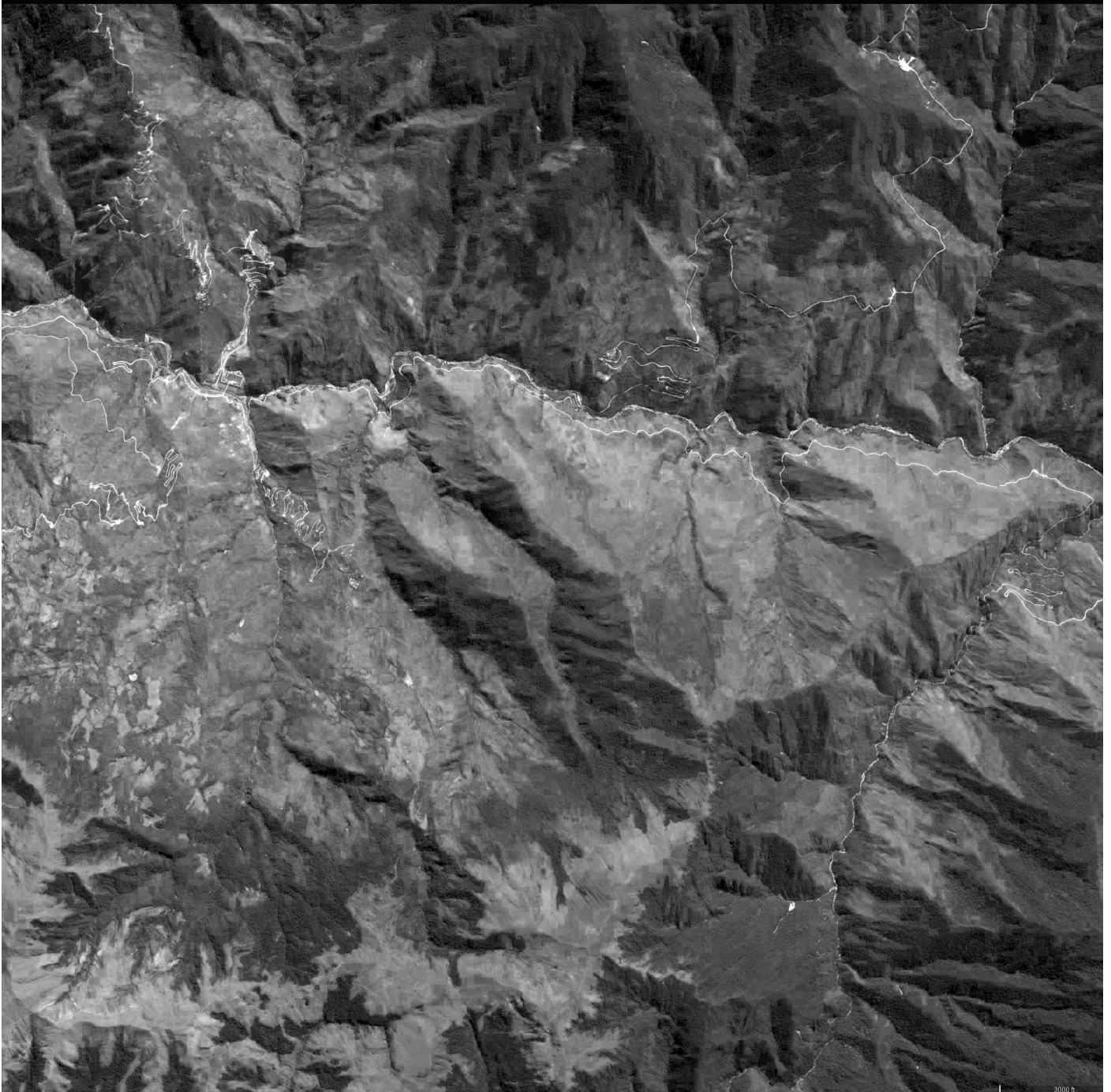


BARCLAY & CROUSSE ARQUITECTURA  
est. 1994

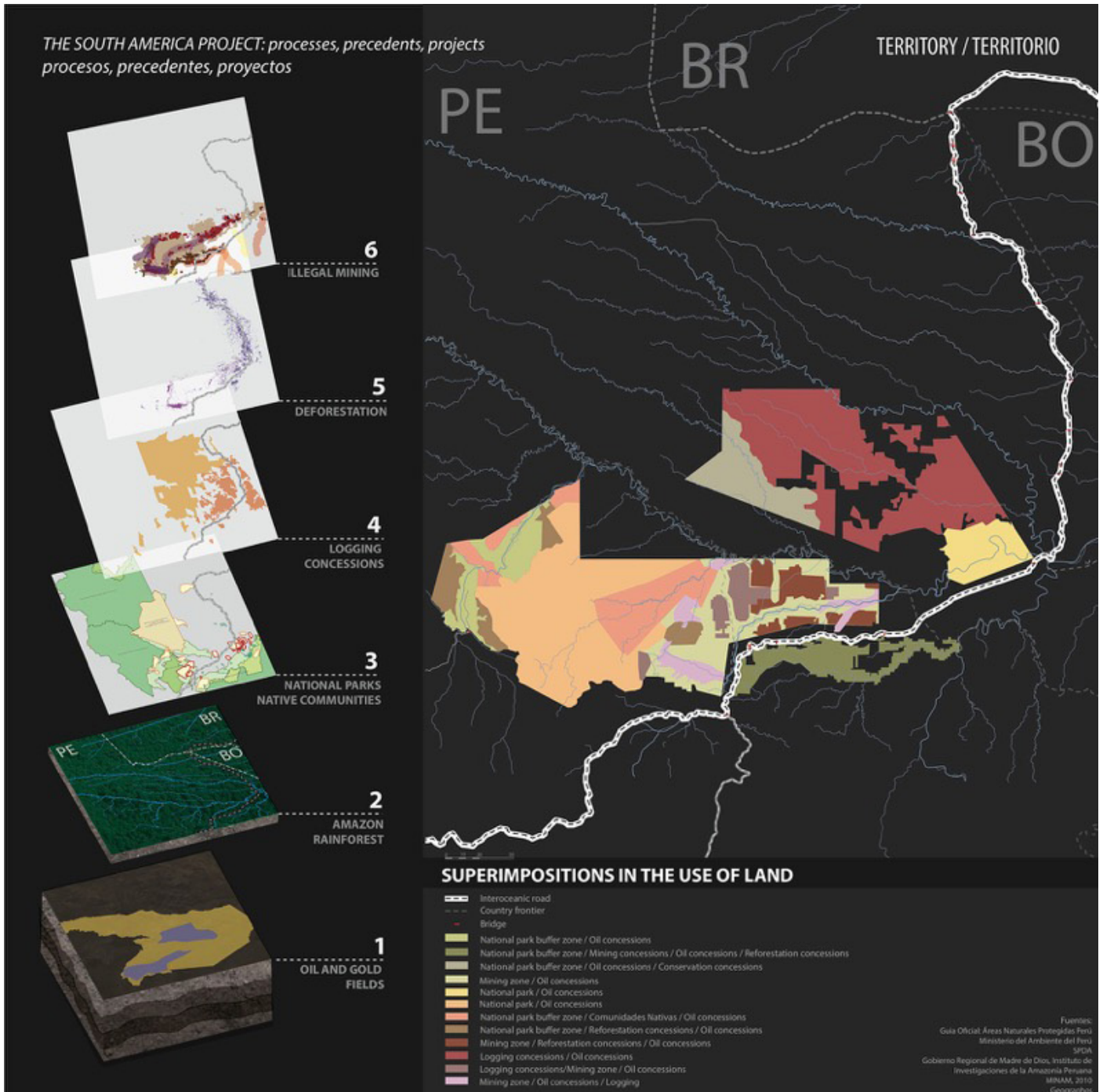
# NEW LANDSCAPES OF THE CONTINENTAL SHORTCUT

Location: IIRSA region Interoceanico

Project Year: 2014



THE SOUTH AMERICA PROJECT: processes, precedents, projects  
 procesos, precedentes, proyectos



The Initiative for the Integration of Regional Infrastructure of South America is an investment initiative aimed at linking the economies of South America through massive, integrated efforts to upgrade highway, water, rail, electric and telecommunications infrastructure throughout the continent. While not explicitly stated, many of the new corridors cutting through the Andes to the Amazon basin are intended as more direct trade

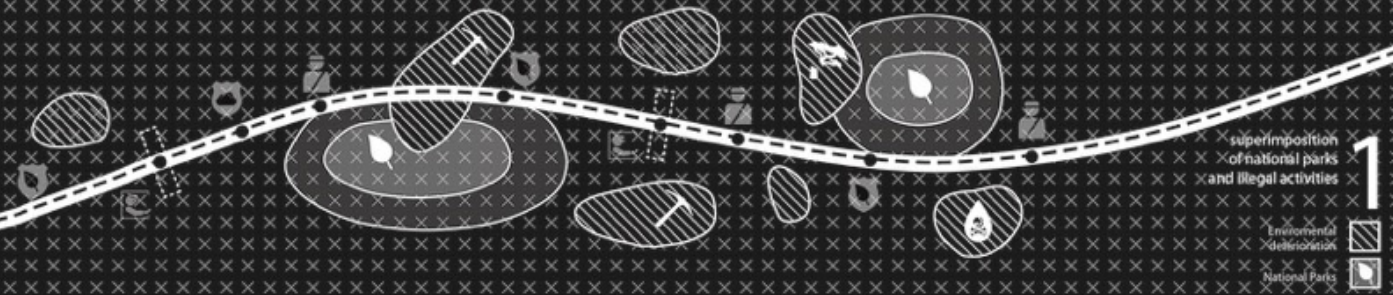
routes to trade with Asia. A negative consequence of these infrastructural upgrades has been the opening of territory to new illegal and unsanctioned mining, industrial and agricultural activities, which has had a devastating impact on the environment along these routes.

This project proposes a series of checkpoints along these roads that include amenities for travelers while also bringing a public presence to the regions. The checkpoints would included

a tower that gives visual a visual connection to the landscape and the degradation happening just beyond the treeline.



team / equipo: Jean Pierre Crousse



CURRENT



1  
2

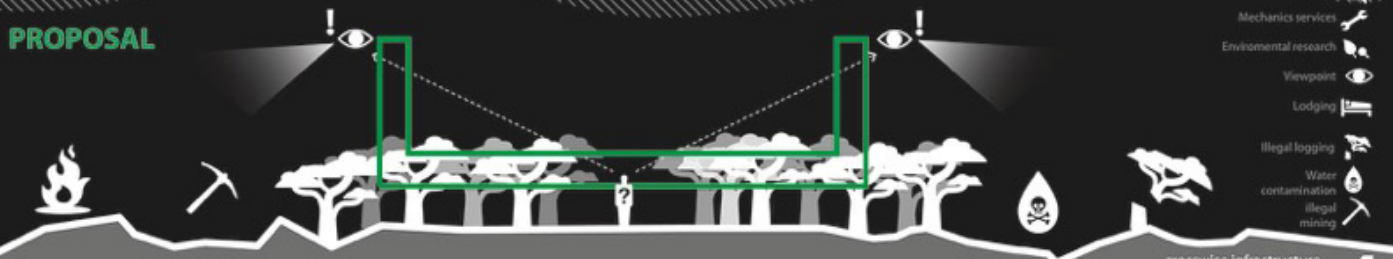
- Toll
- Police control
- Environmental guard
- Forest Keeper



3

- Public space
- Local Production
- Mechanics services
- Environmental research
- Viewpoint
- Lodging
- Illegal logging
- Water contamination
- illegal mining

PROPOSAL



4







DETAIL / DETALLE

