

LORENZO CASTRO

Lorenzo Castro Arquitectos
Bogota, Colombia

PARQUE DEL AGUA

Category: Parks/ Plazas
Location: Bucaramanga
Project Year: 2003

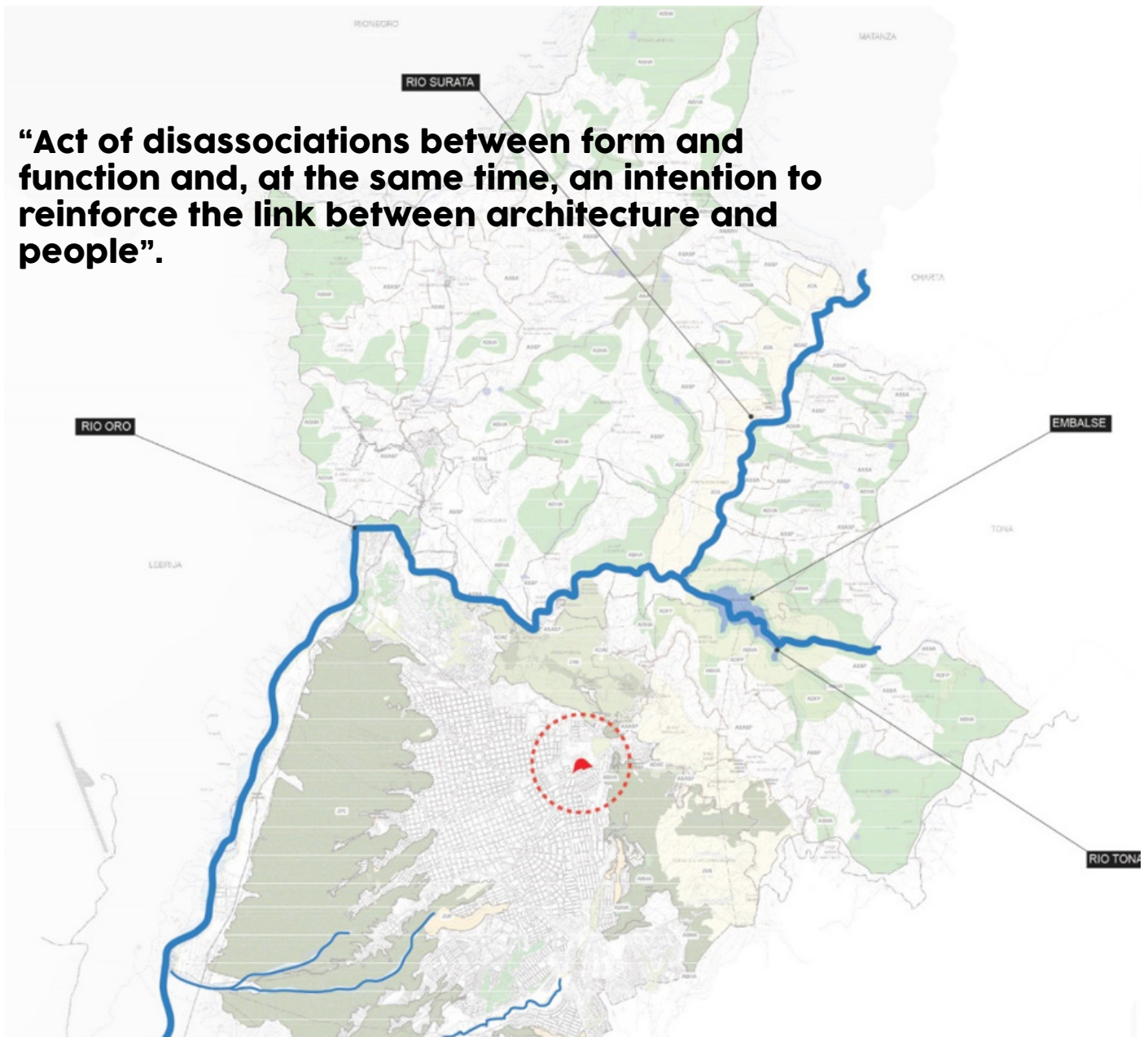


Image © 2016 DigitalGlobe

dms 7°07'49.7"N 73°06'35.5"W

elevation 959 m / 3,146 ft

“Act of disassociations between form and function and, at the same time, an intention to reinforce the link between architecture and people”.



1) water system, Bucaramanga

Bucaramanga is a city mostly made up of rugged terrains and boisterous vegetation. The projects aimed to transform the city's water treatment plant into a public park where visitors could recreate while simultaneously being educated about the purification process of the water. Instead of generating an urban square the project generates a series of wide pedestrian circulation paths, which articulate the different parts of the treatment plant. Embedded in the circulation network are small spaces surrounded by

both water and dense vegetation. These secluded corners allow for tranquil spaces in separation of the dynamic pedestrian pathways. These spaces are animated both by the subtle cascading water and the sight people walking. Lorenzo Castro utilized the rugged topography to his advantage in order to generate and highlight specific views. He created areas of circulation that allowed the public to view larger areas of the park while at moments planting views towards the city, allowing for users to orient themselves. Lorenzo Castro leaves it out

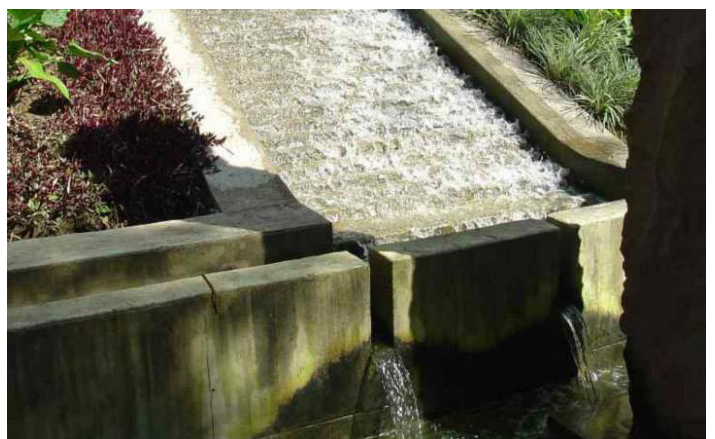
to the users to inhabit the space to their own choosing. Utilizing variations of scale, material, and ambience he is able to expand the many interpretations and uses of the park. Stone is used for both for cladding and for ground surfaces, the concretes is left bare, displaying its rough characteristics. The water flowing through the various surfaces, contrasted against a rough concrete, the wooden benches and tables displays a juxtaposition between organic materials and a mineral palate.



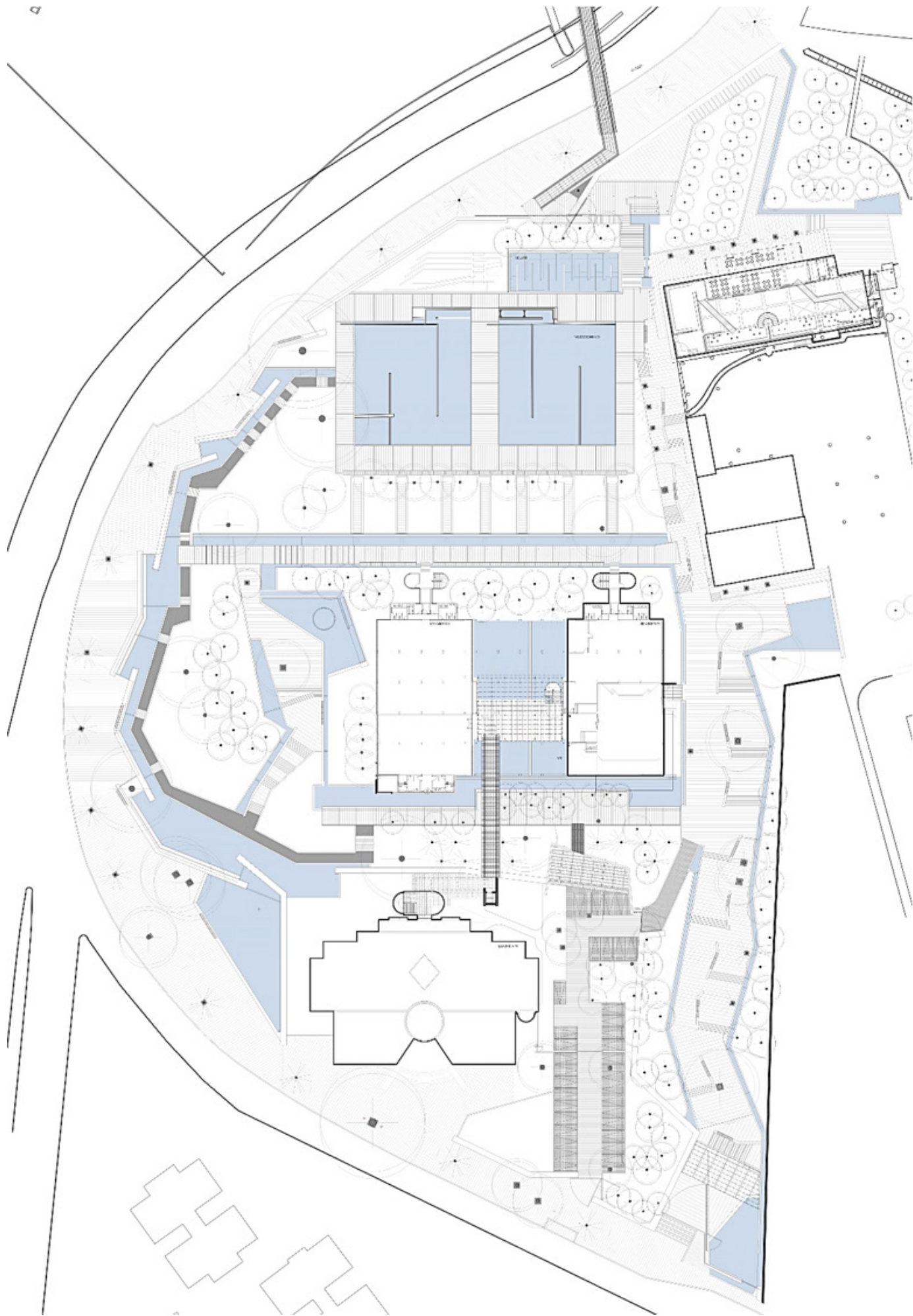
2) park and the city



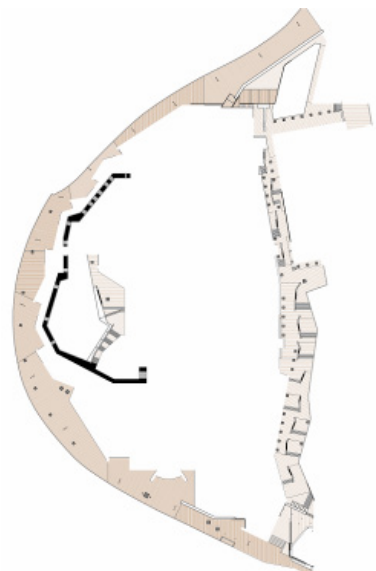
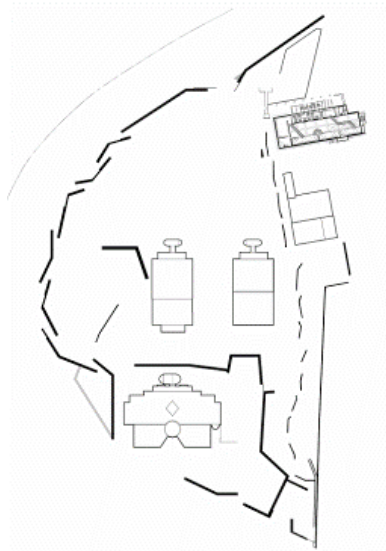
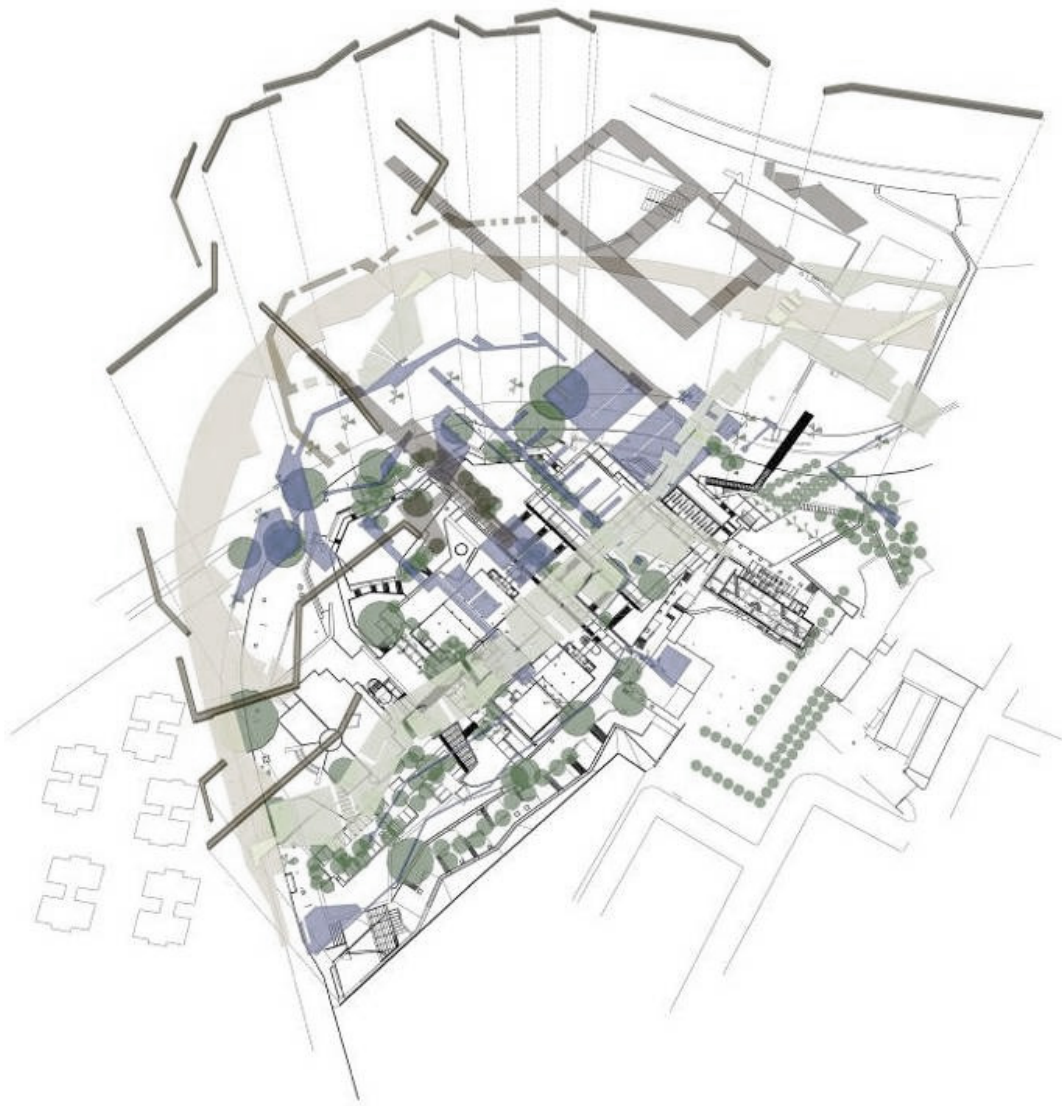
3) entering Parke del Agua form the street

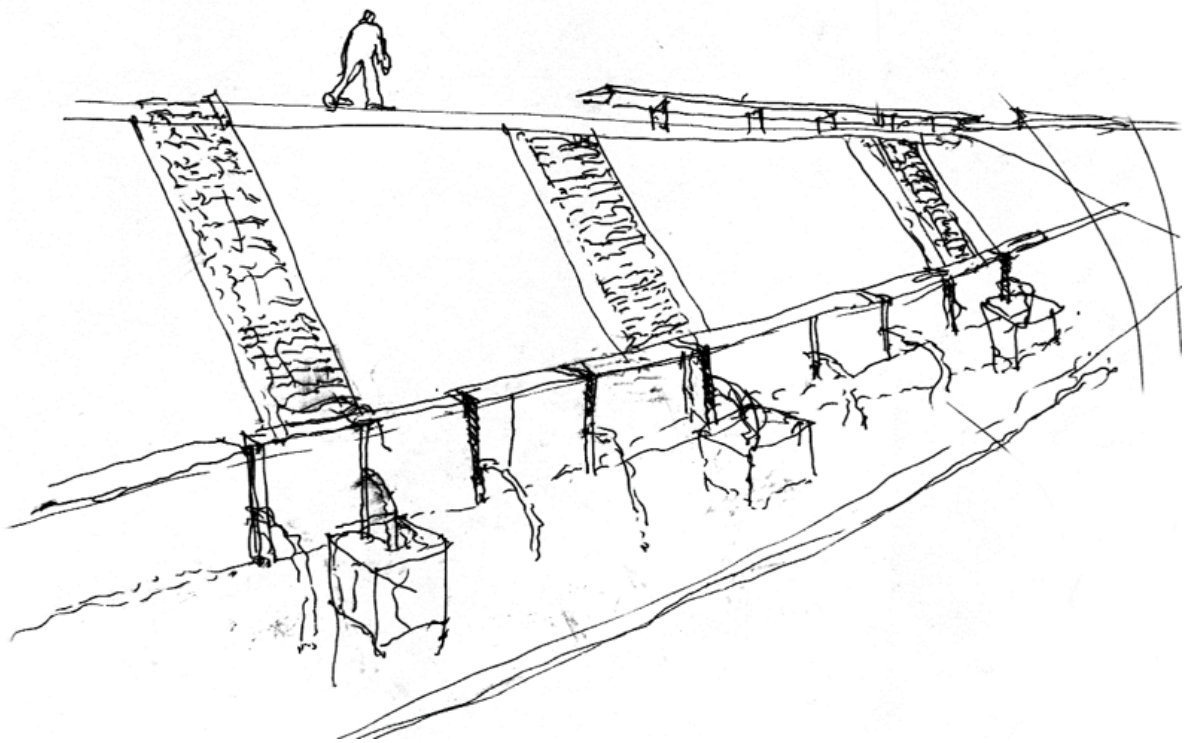


4-7) contrast between organic and mineral palette

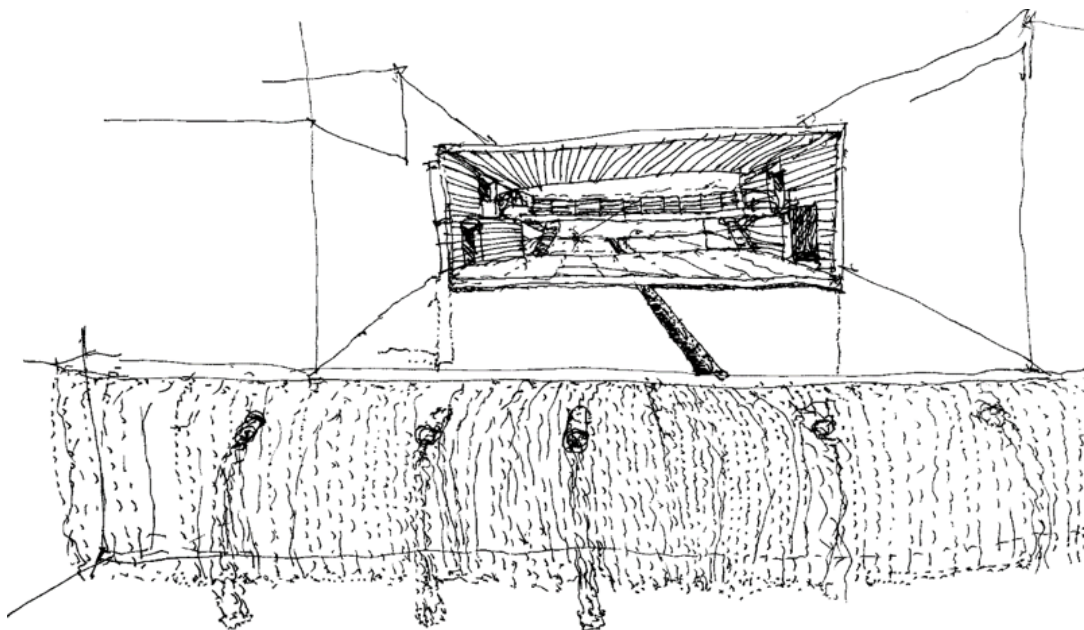


8) general plan





13-14) spaces animated by subtle cascading waters and pedestrian walkways



15-16) water treatment plant + integration into the terrain



17) rugged topography utilized to highligh views