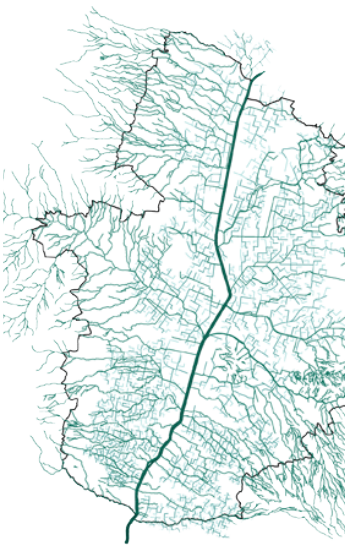
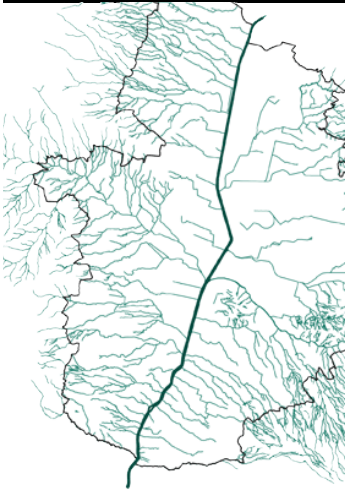


L-A-P  
est. 2011

Edgar Mazo y Sebastián Mejía Á  
Carrera 72 #circular 3-24, Medellín, Antioquia, Colombia  
<http://www.l-a-p.co>  
(+57 4) 411 4040



Medellin's River

Valle de Aburra, Antioquia, Colombia



National Museum of Memory

Bogota, Colombia



Asomadera and Nutibara Hills

Medellin, Colombia



Carrera Bolivar

Medellin, Colombia

L-A-P  
Laboratorio de Arquitectura y Paisaje  
est. 2011

Edgar Mazo y Sebastian Mejia A.  
Medellin, Colombia

## ASOMADERA and NUTIBARA HILLS

Category: urban plans

Location: Medellin, Antioquia, Colombia

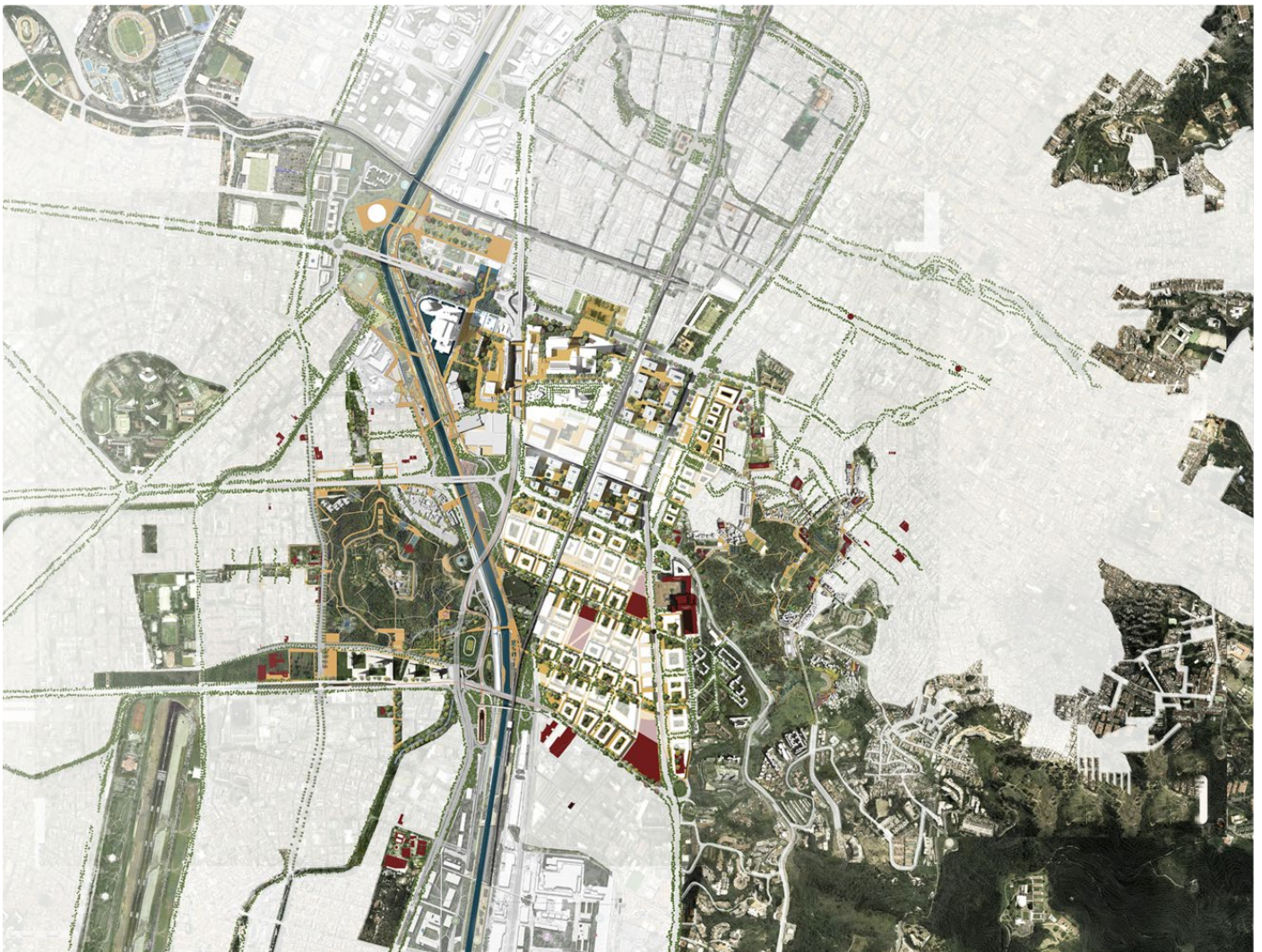
L-A-P + Taller Sintesis + Colecto Urbano

Surface: Asomadera: Paisajismo: 32 Ha/Urbanismo: 3.9 Ha

Nutibara: Paisajismo: 26 Ha/ Urbanismo: 28.8 Ha/ Diseno areas abiertos: 2.75 Ha

Project Year: 2014

\*Medellin Civic Center Planning and Landscape International Competition:  
First Place for Asomadera Hills

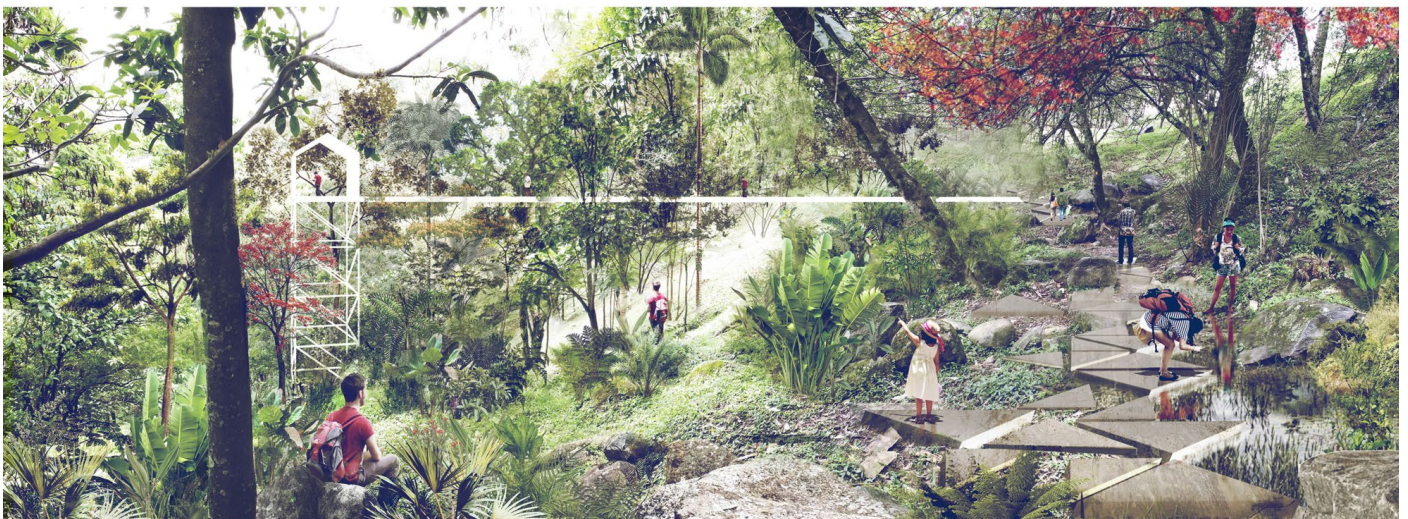
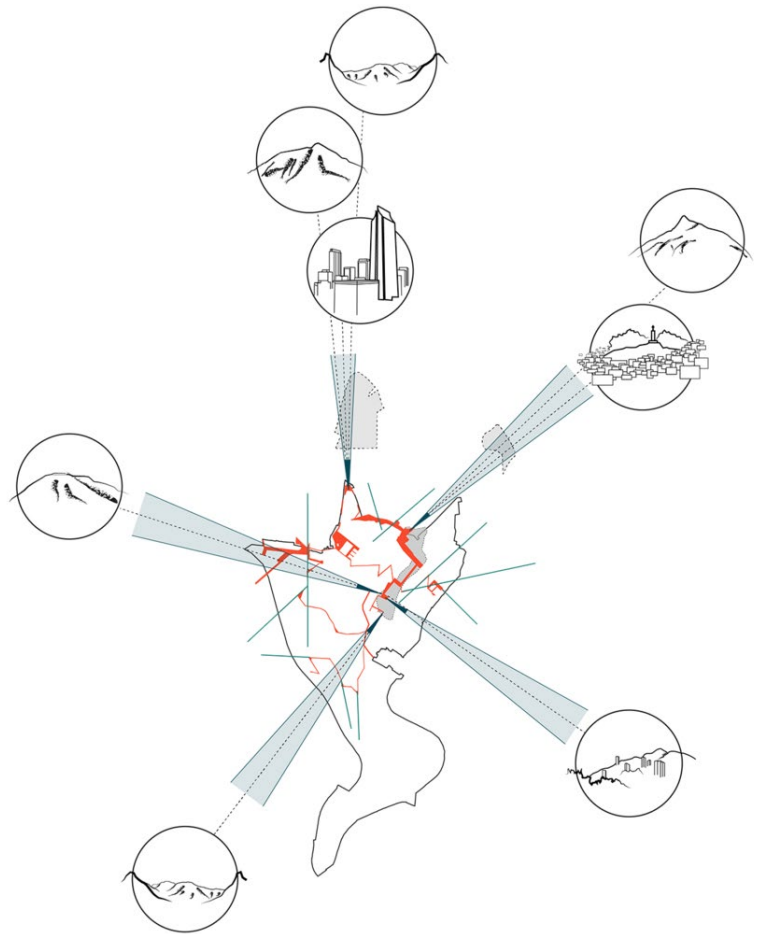


# “...STRENGTHEN THE RELATIONSHIP BETWEEN MAN AND NATURE...”

The international public competition for urban planning and landscape design of Civic Center Medellin seeks to transform the center with the intervention of the administrative area of La Alpujarra, the sectors of La Bayadere and New Street, and the Nutibara and La Asomadera hills. LAP's proposal strengthens the relationship between man and nature from the expansion and recovery of the devastated geographical conditions for urban growth.

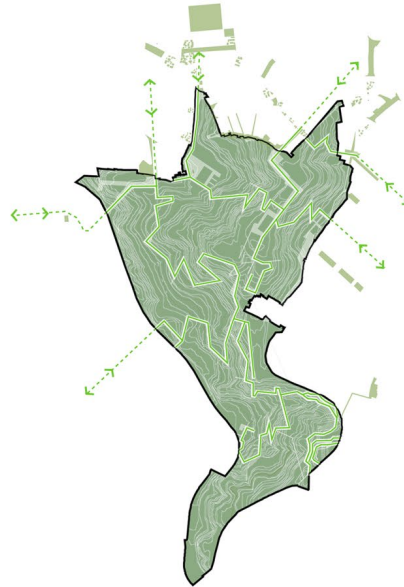
LAP's proposal strengthens the relationship between man and nature from the expansion and recovery of the devastated geographical conditions for urban growth.

A series of interventions are proposed according to the hill's geomorphological situation to create connections between architecture, hybridization, man and nature. These elements comes from the designer's understanding of nature and landscape and they lead visitors through the hill creating a unique experience.





Planning Map



Theatres: Small and large meeting spaces on gentle sloping landscape. They act as continuations of geography with permeable floor surfaces.



Water Mirrors: interventions to collect water and set a moist environment that welcomes new vegetation that grow within such a new environment.



House of Nature: wooden structures that rise above the floor level with its walls showing the tension of nature trying to enter the artifact. These structures establish horizontality on the steep slope. They allow people to be at the same height of varies layers of tropical to explore the forest and observe the wildlife.



“Summits”: Summits are key components of the hills. Large trees are planted to outline the upper bound and the flat open areas are used to develop activities and programs that can have an open view over the landscape of the valley.