

PLAN: B
est. 2000

Felipe Mesa | Federico Mesa
Medellin, Colombia

4 ESCENARIOS DEPORTIVOS

Category: Parks / Plazas
Location: Medellin, Colombia
Surface: 30,964 sqm
Project Year: 2009

*Winning proposal - International Public Competition



dms - 06° 15' 20" N / 75° 35' 18" W

elevation - 1,495 m / 4,905 ft

“A built continent that takes part in the same technical and spatial strategies.”

This competition required designing 4 independent sports units, within the same area, relatively close to each other. The proposal understood the group of buildings as a single one, like a built continent that could take part in the same technical and spatial strategies and adapt to the timeframe of the construction program. This structure is perforated to allow people to cross through it. In this way there are a number of proposed semi-covered public space mixing with the sports units and with gardens.

The particular situation of

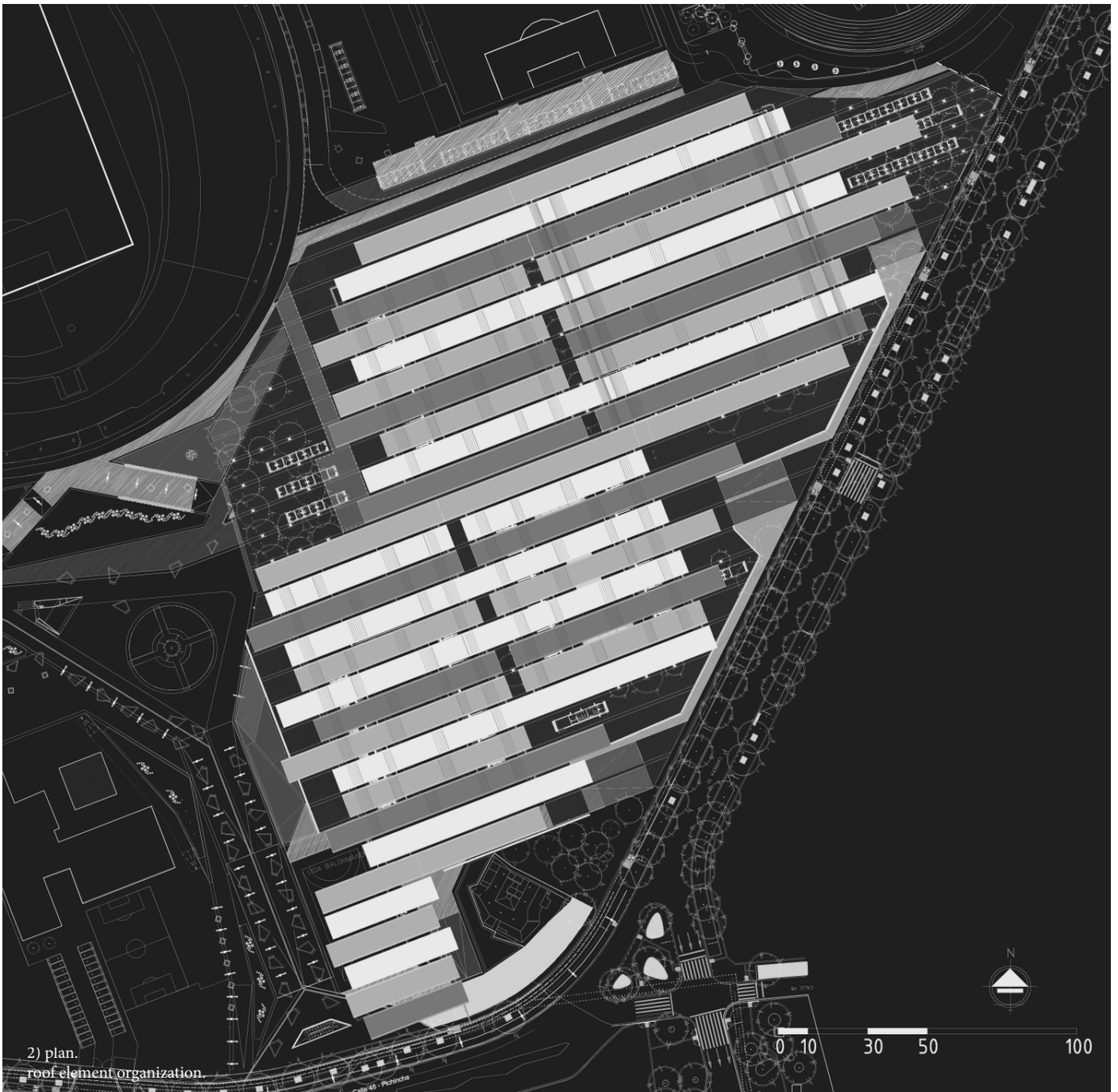
having to design three arenas and make a renovation for a fourth one in the same area, opened the possibility to propose a roofing system of parallel strips that function for both the competition areas and public areas in a simultaneous way, going across each building, growing and stretching as needed. This configuration can be understood like an open scheme that can grow, change its size and be adapted to a changing budget or different unexpected events. Each one of the strips gains altitude over the competition areas reflecting the mountain landscape of the Aburrá valley, proposing tropical

sports scenarios, permeable to people passage and view and the typical spring weather of this city.

The location of the site relative to the orientation of the sun and the direction of the winds in the Aburrá valley determined the location of the buildings, the stands and finally, public walkways. The north and south façades are open to let the major winds flow through, and the east and west façades face the stands have eaves that control the morning and the afternoon sun. This organization and arrangement allows for a simple multifunctional interior, that

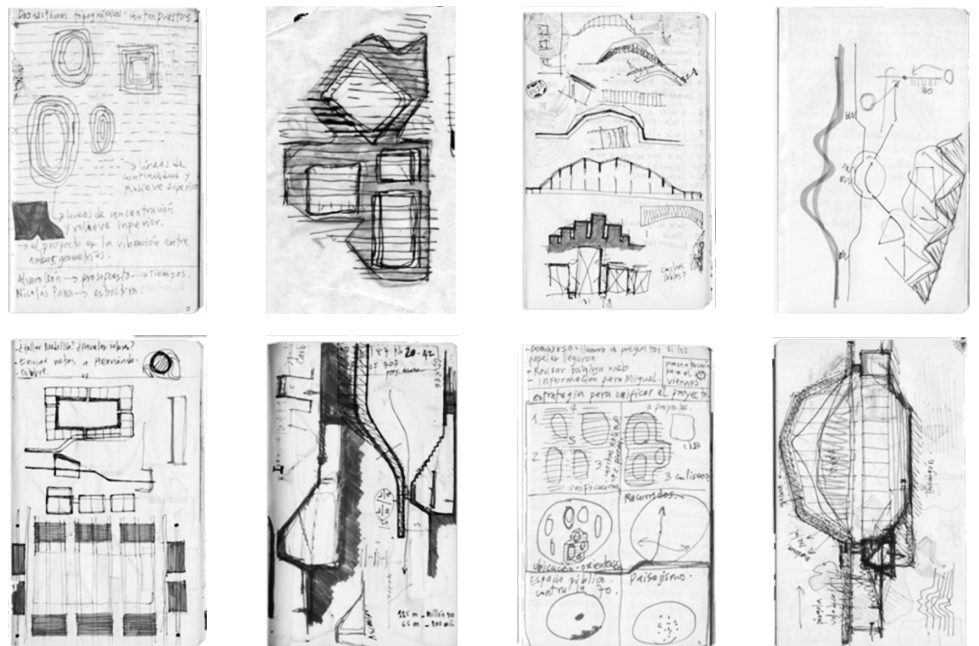


Underside of canopy.

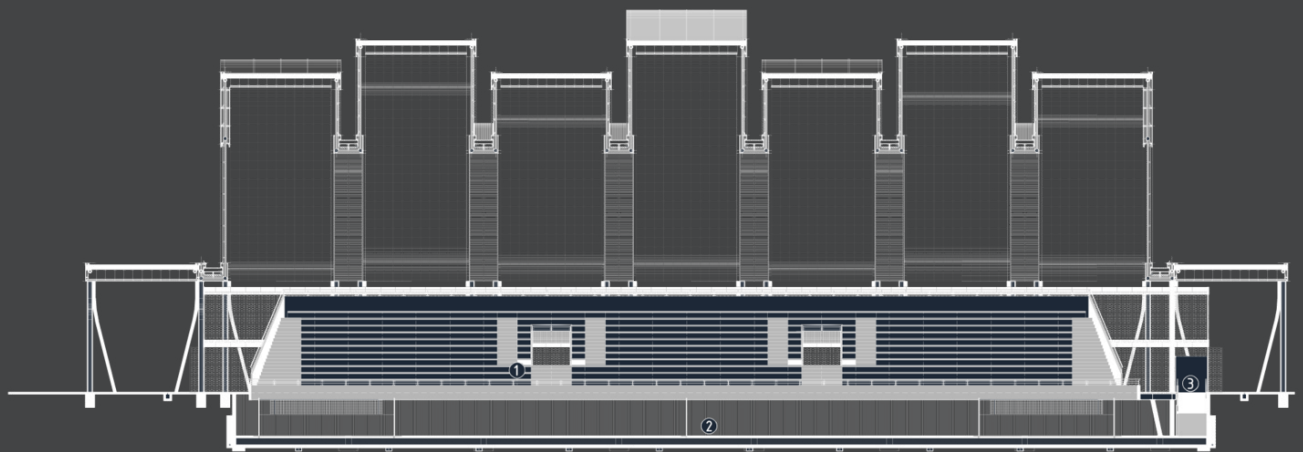


can be seen as a rectilinear bioclimatic diagram.

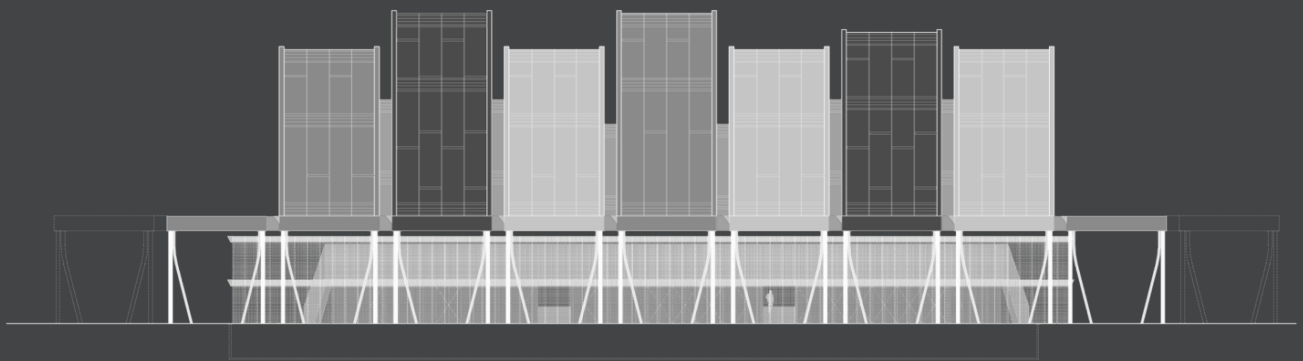
The proposed system of sports scenarios does not require any mechanical acclimatization. This was achieved by using perforated façades that slow down the speed of the wind but let it permeate the building. These perforated façades also allow passer byers to observe and participate in spectating on the indoor, recreational activities and sports inside the building to enhance public participation.



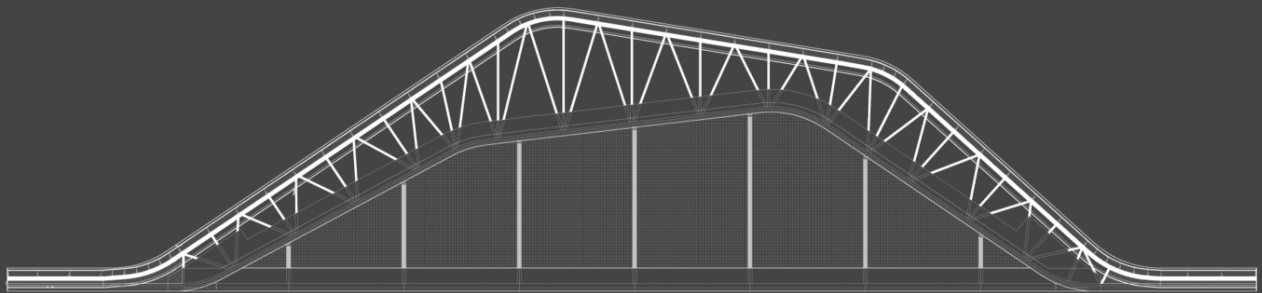
3) sketches.



- 1 Graderia
- 2 Zona Competencia
- 3 Rampa Acceso Deportistas

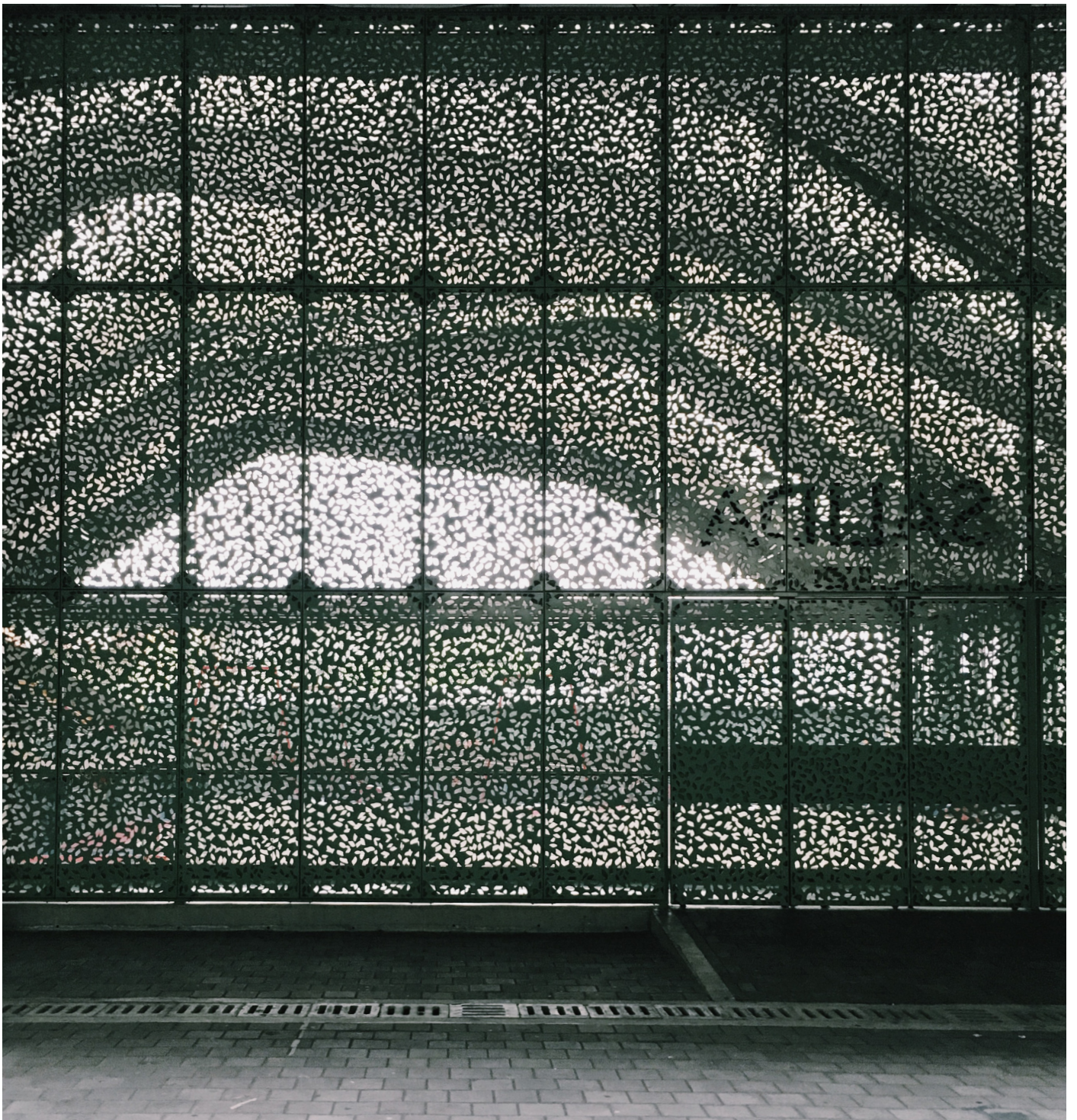


0 2 4 10 20



0 2 4 10 20

4) elevation and section.



5) porous screen boundary.



6) spectators entrance staircase.



7) skate park on edge of site.



8) interior, open air, sports court.