

AA.VV.

Alfredo Garay, Irene Joselevich, Nestor Magariños,  
Graciela Novoa, Adrián Sebastián y Marcelo Vila  
Buenos Aires, Argentina

# PARQUE MICAELA BASTIDAS

Category: parks / plazas

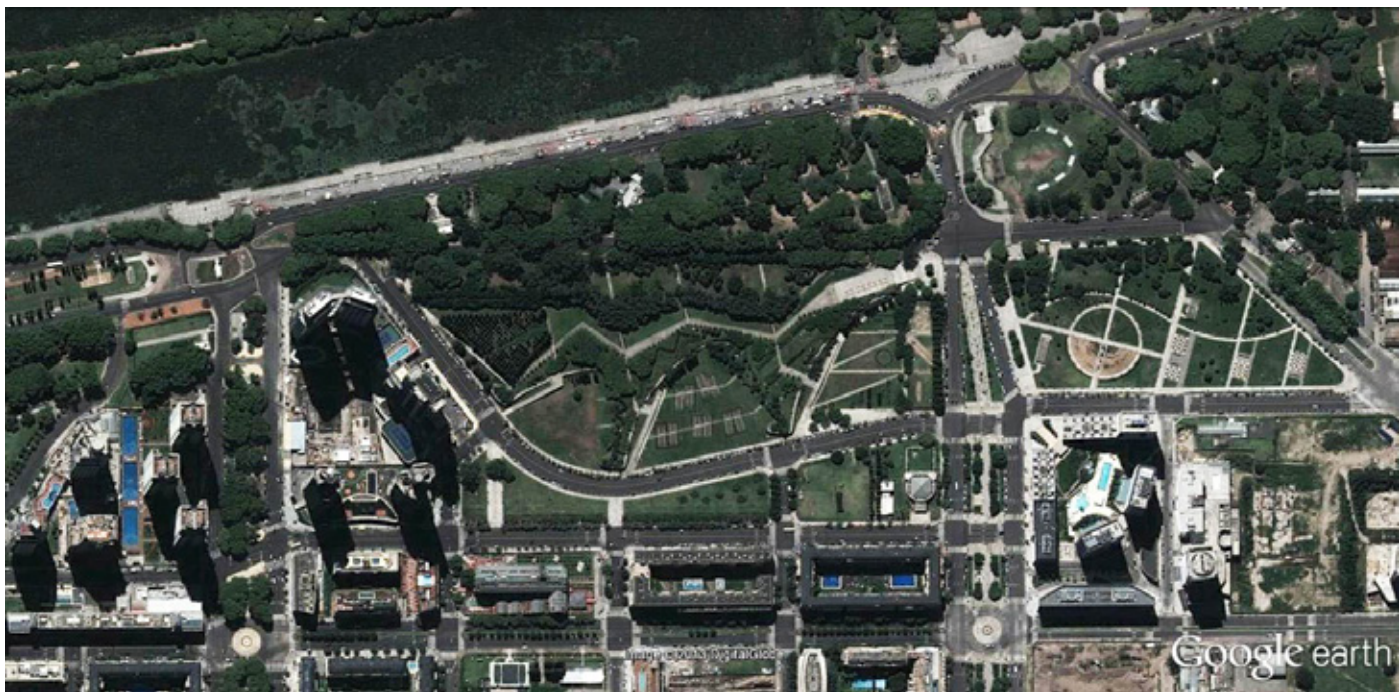
Location: Buenos Aires, Argentina

Project Year: 1996-2003



dms 34°36'55"S 58°21'35"W  
elevation 5 m

“Micaela Bastidas Park tries to link and tie the city with the river, generating spaces of massive metropolitan scale and containment areas”.



Realized by a multidisciplinary team led by architect Marcelo Vila, Micaela Bastidas Park tries to link and tie the city of Buenos Aires with the estuary of river Plata, generating spaces of massive metropolitan scale and containment areas.

In the heart of Puerto Madero, the unique geography of the park adds 50 thousand square meters to the green spaces of Buenos Aires. Three 5 meters high hills, supported by stone-walls, divide its huge surface into smaller spaces. On the one hand, the park represents a large metropolitan green

area designed to supply the public from different parts of the city; on the other hand it generates spaces of a smaller dimension, almost squares, which acquire their own character through the relationship with the surrounding urban fabric.

The authors of the project sought to reproduce the ravines that characterize the squares of Buenos Aires close to the river's coast. Part of a larger set of 50 hectares of public spaces, the park take advantage of sunlight, thanks to the orientation of its artificial dunes

The formal limit of this space is constructed by a perimetral route that is the final part of the system of land containment structured by a layout of walls of gabions. The project is completed with public squares located at the urban edges of the area, which increase the relationship with the nearby neighborhoods and allow external access to the upper level of the slope.







## Credits:

### PARQUE MICAELA BASTIDAS

#### Location:

Puerto Madero, Buenos Aires, Argentina.

#### Team:

Alfredo Garay, Irene Joselevich, Nestor Magariños, Graciela Novoa, Adrián Sebastián y Marcelo Vila

#### Photography/Images:

Aldo Facho Dede, arquitecto. 2013

#### Sources:

<https://habitar-arq.blogspot.cl/2013/07/parque-micaela-bastidas.html>

[https://es.wikiarquitectura.com/index.php/Parque\\_Micaela\\_Bastidas](https://es.wikiarquitectura.com/index.php/Parque_Micaela_Bastidas)

<https://turismo.buenosaires.gob.ar/es/attractivo/parque-micaela->

#### Dossier:

Jeannette Sordi, Serena Dambrosio,  
Design Lab, Universidad Adolfo Ibañez