

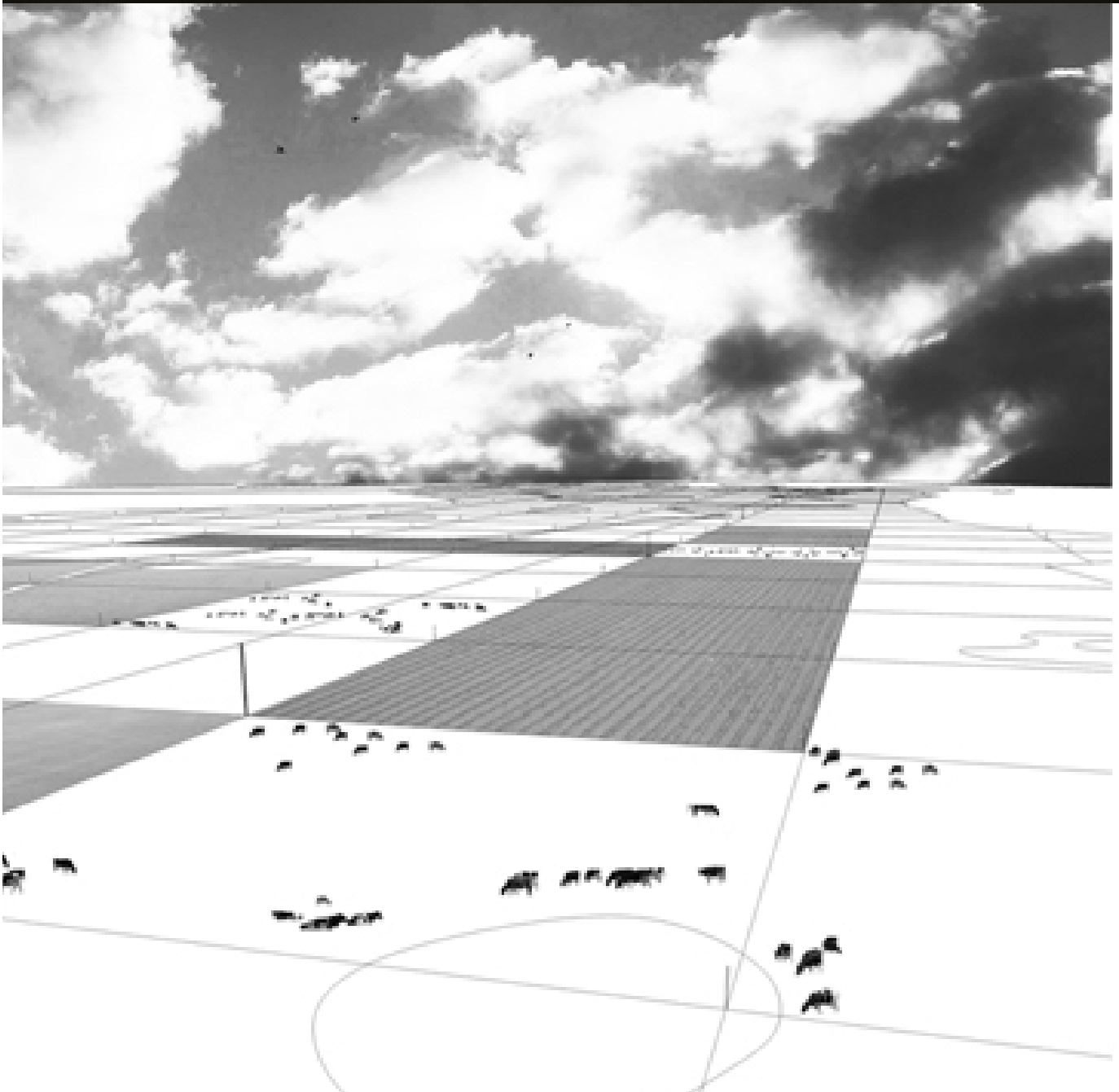
UMWELT
UMWELT
<http://www.umw.cl/>
Santiago, Chile

FORMA PRODUCTIVA I

Category: speculations / representations

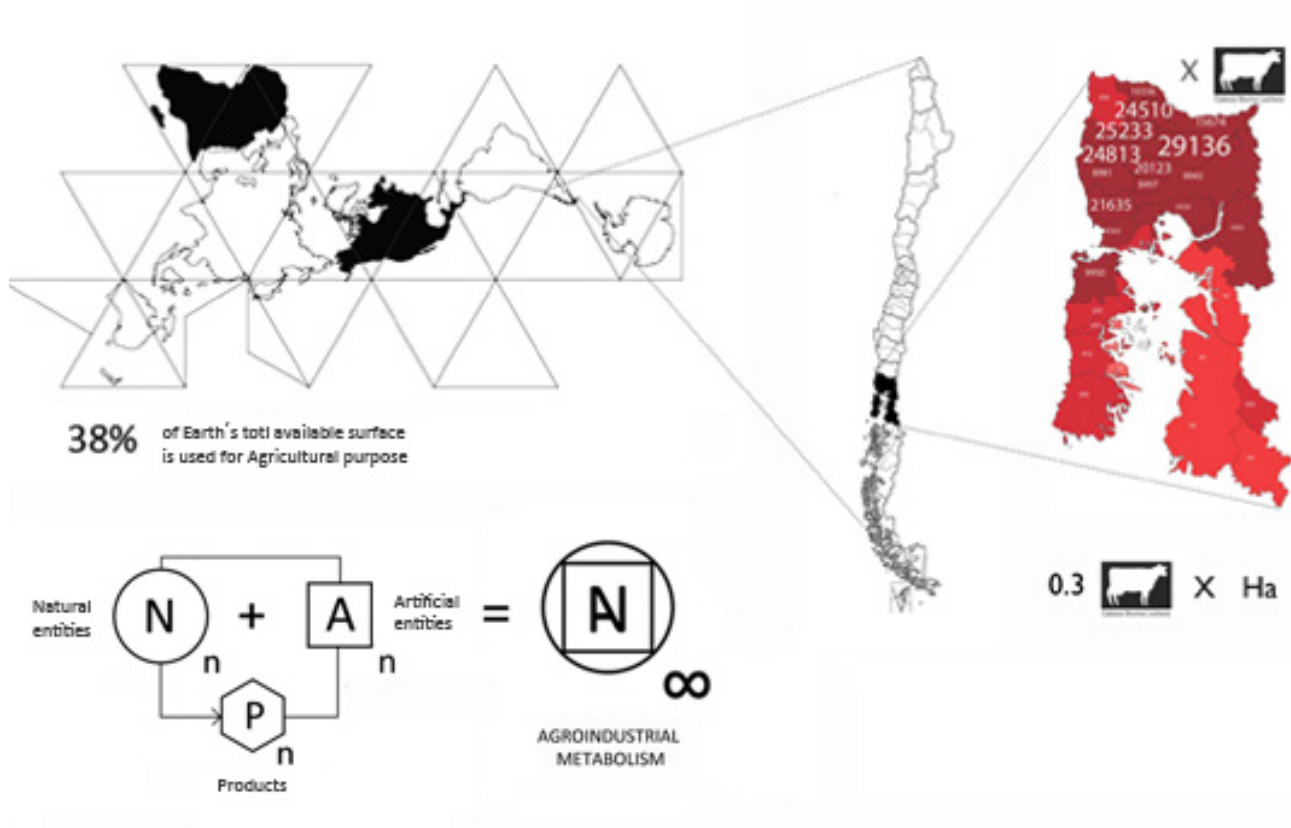
Location: Río Negro, Osorno, Chile

Project Year: 2011



dms 40°47'43.3"S 73°13'04.8"W
elevation 57 m

“the project tries to present new productive models that can create rural units of greater resilience ”.

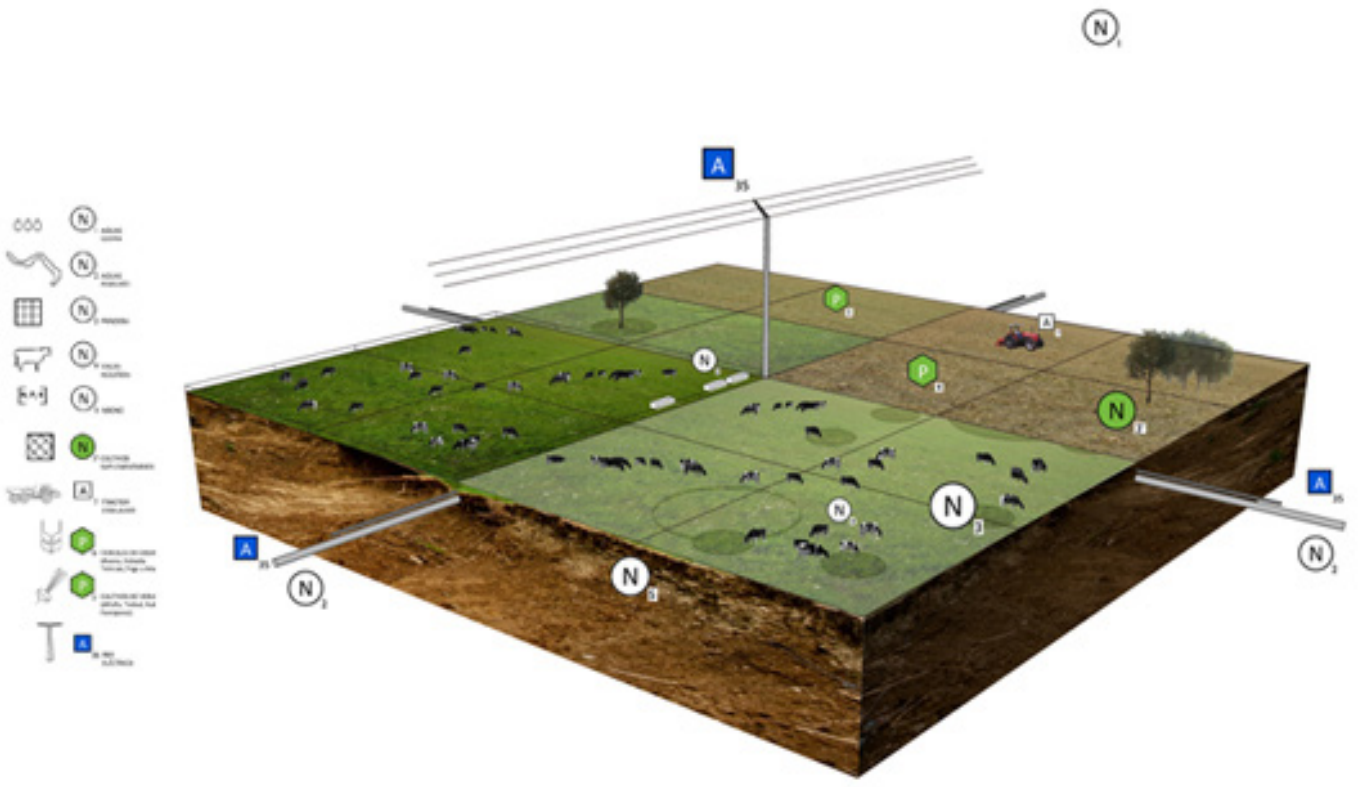
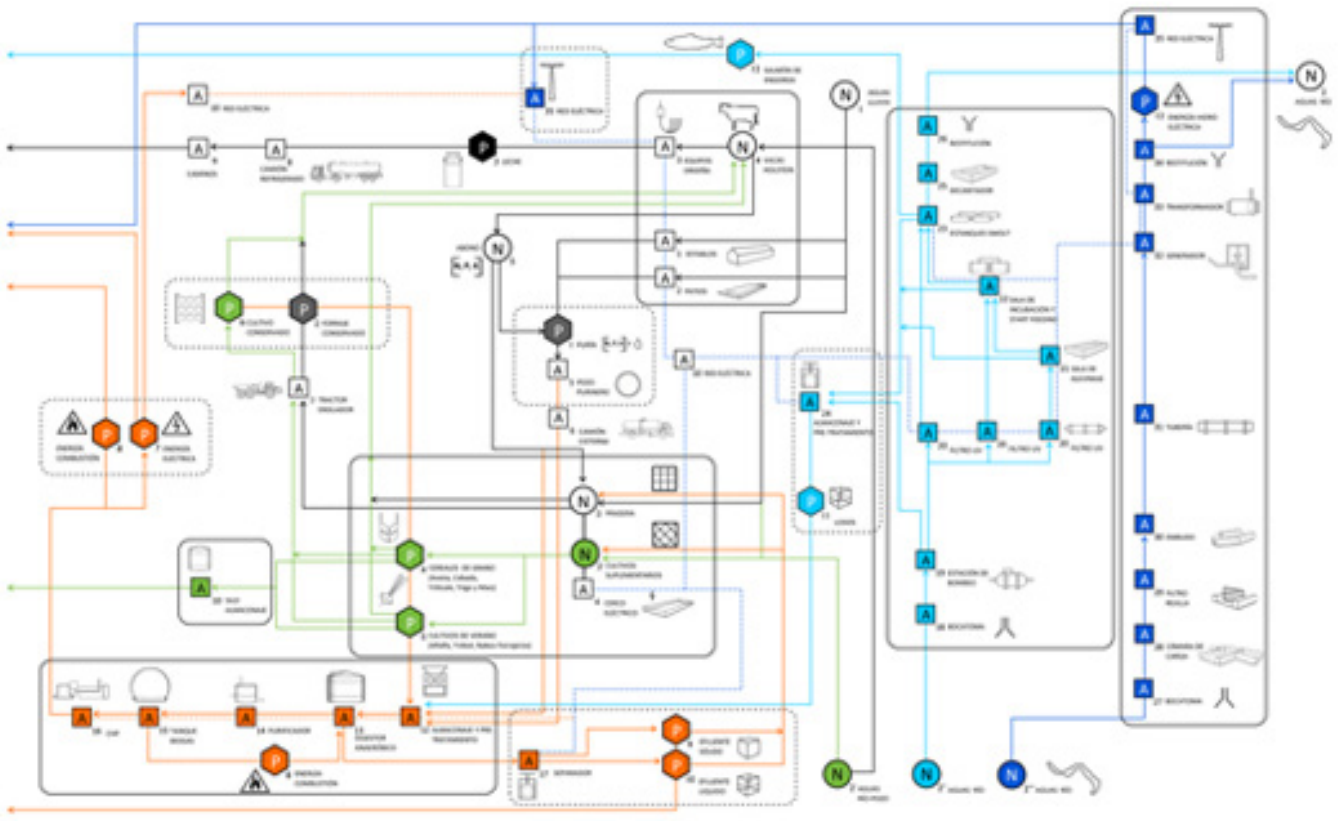


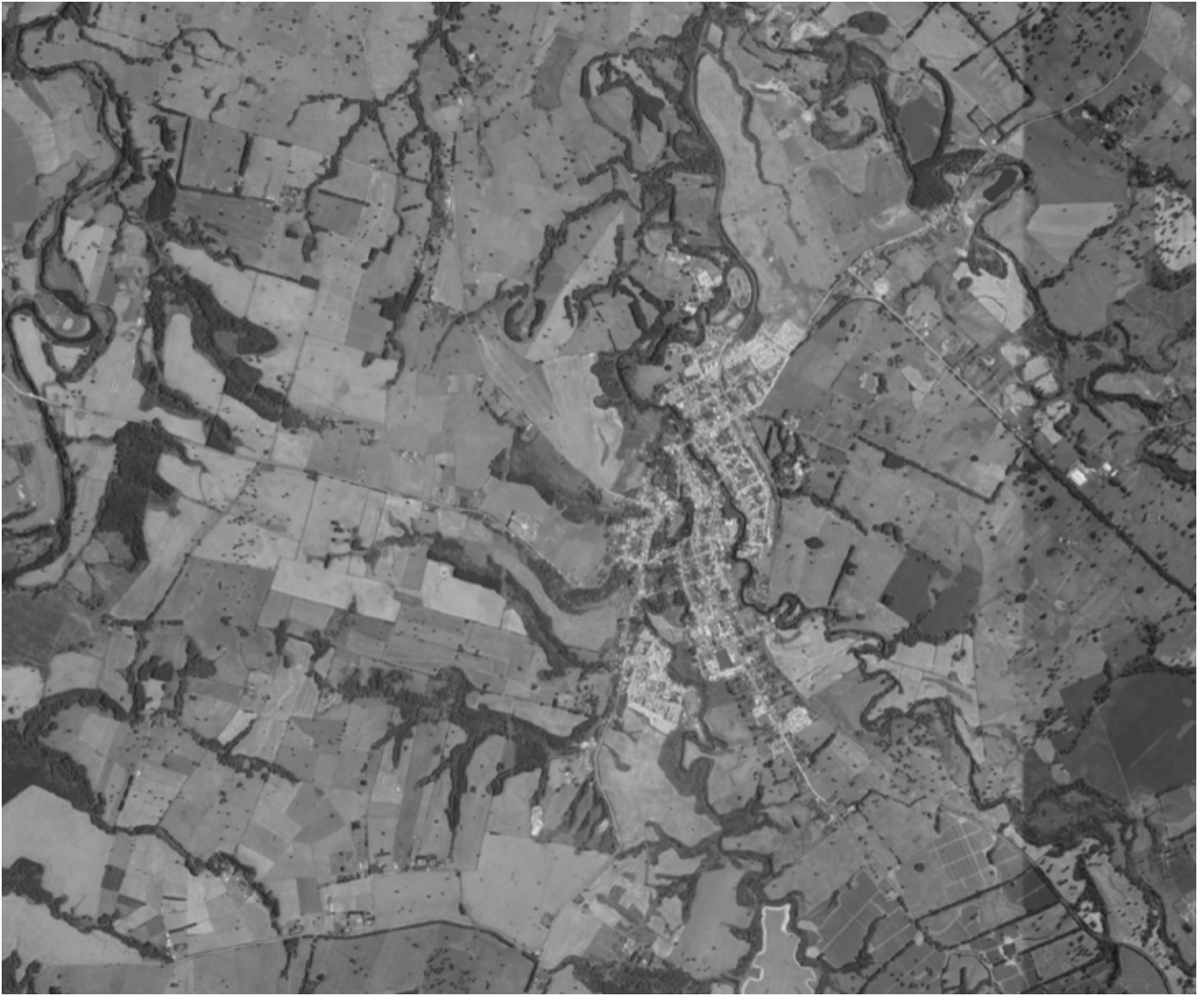
Forma Productiva I is a research / project, carried out by the office UMWELT in 2011, which raises the challenge of analyzing contexts that are usually unrelated to the reality of the contemporary city, such as the so called “Productive Territories”.

The project explores the context of the agroindustry of the X Lakes Region in Chile, focusing specifically on the model of territorial and economic obsolescence of small and medium-scale dairy farms. According to the analysis of this panorama the project tries to present new

productive models that can create rural units of greater resilience. The argument raises the possibility of generating a new model for the land unit, integrating and inserting a series of agents that allow diversifying the range of programs and productive systems. The project also suggests that the productive and programmatic intensification of the farm can give the agro-industrial metabolism the capacity to obtain certain degrees of autonomy and to acquire the necessary conditions to reach a state of equilibrium and efficiency. Productive landscapes

would thus be able to be programmed to respond in an expansive way to the different and fluctuating requirements of the industry, the environment, and the rural culture of their surroundings.





Credits:

FORMA PRODUCTIVA I

Location:
Río Negro, Osorno, Chile

Team:
UMWELT, Ignacio García Partarrieu

Photography/Images:
UMWELT

Sources:
<http://www.umw.cl/index.php/formaprod>

Dossier:
Jeannette Sordi, Serena Dambrosio,
Design Lab, Universidad Adolfo Ibañez