

PAULO MENDES DA ROCHA

est. 1957

Paulo Mendes da Rocha  
São Paulo, Brasil

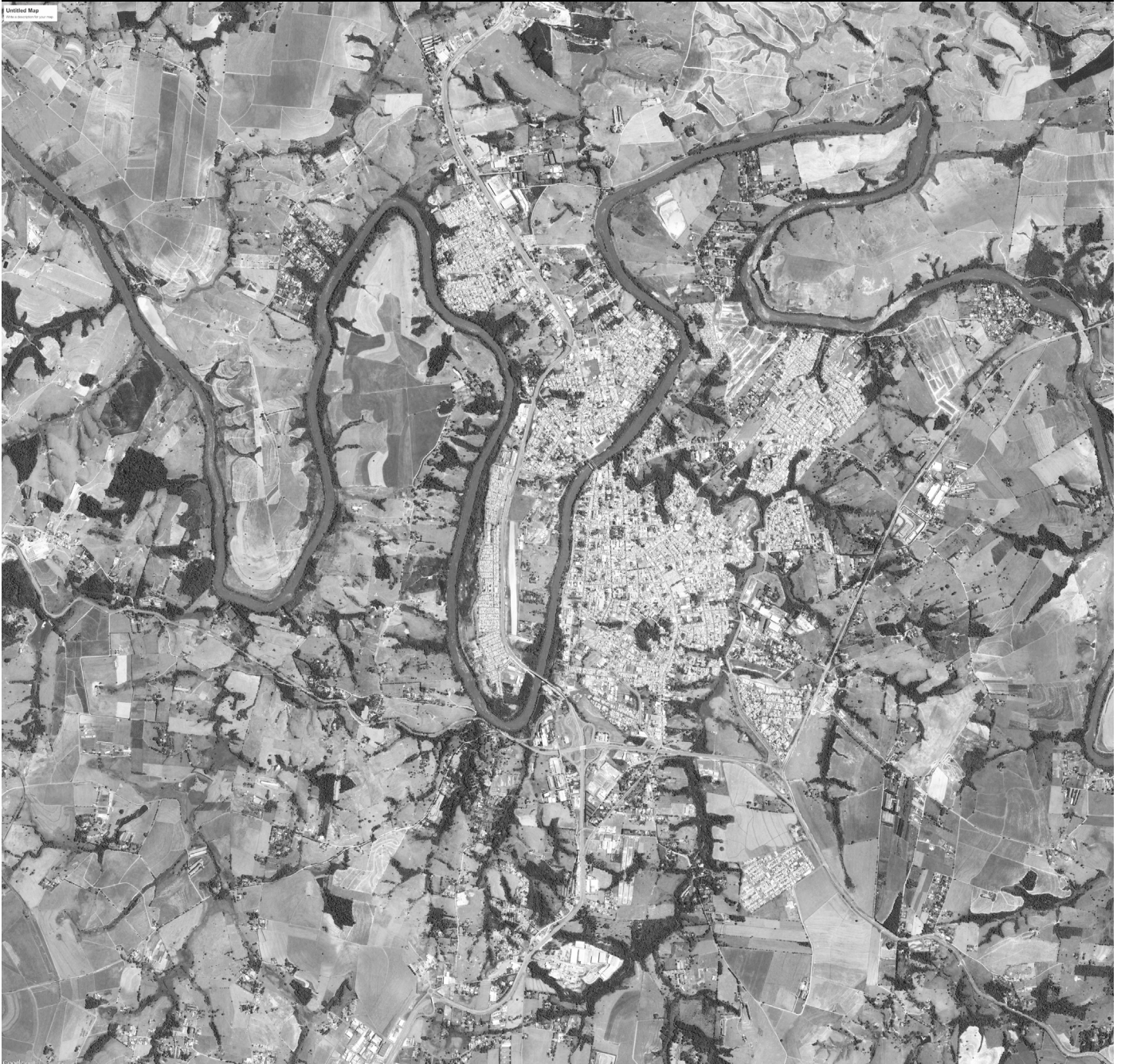
## CIDADE TO TIETE

Category: urban plans

Location: Tiete, SP, Brasil

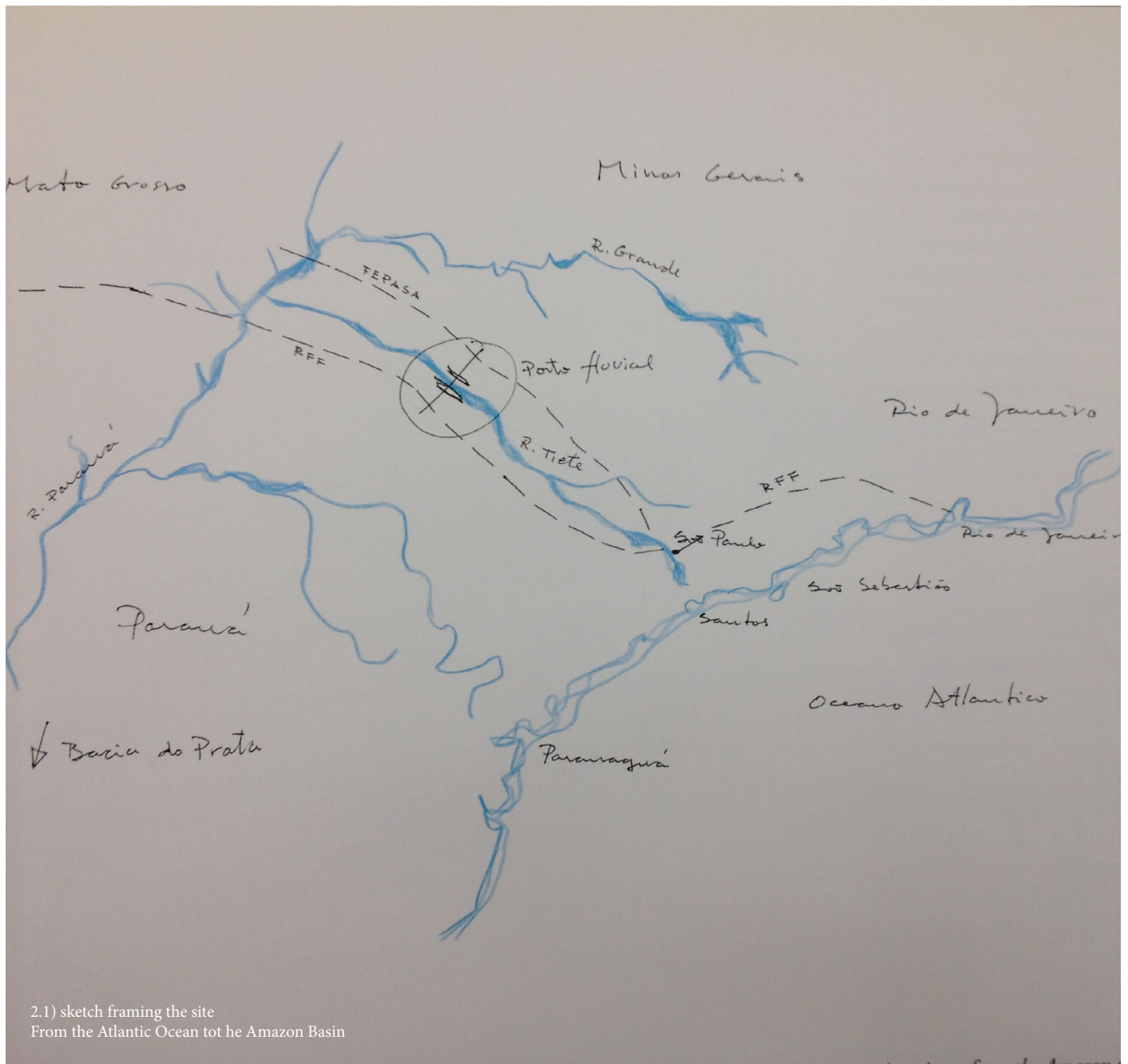
Surface: N/A

Project Year: 1980



dms 23° 05' 32" S / 47° 42' 50" W

elevation 480 m / 1,575 ft



The city of Tietê was designed as a riverine port aimed to connect a river with a highway and a railroad.

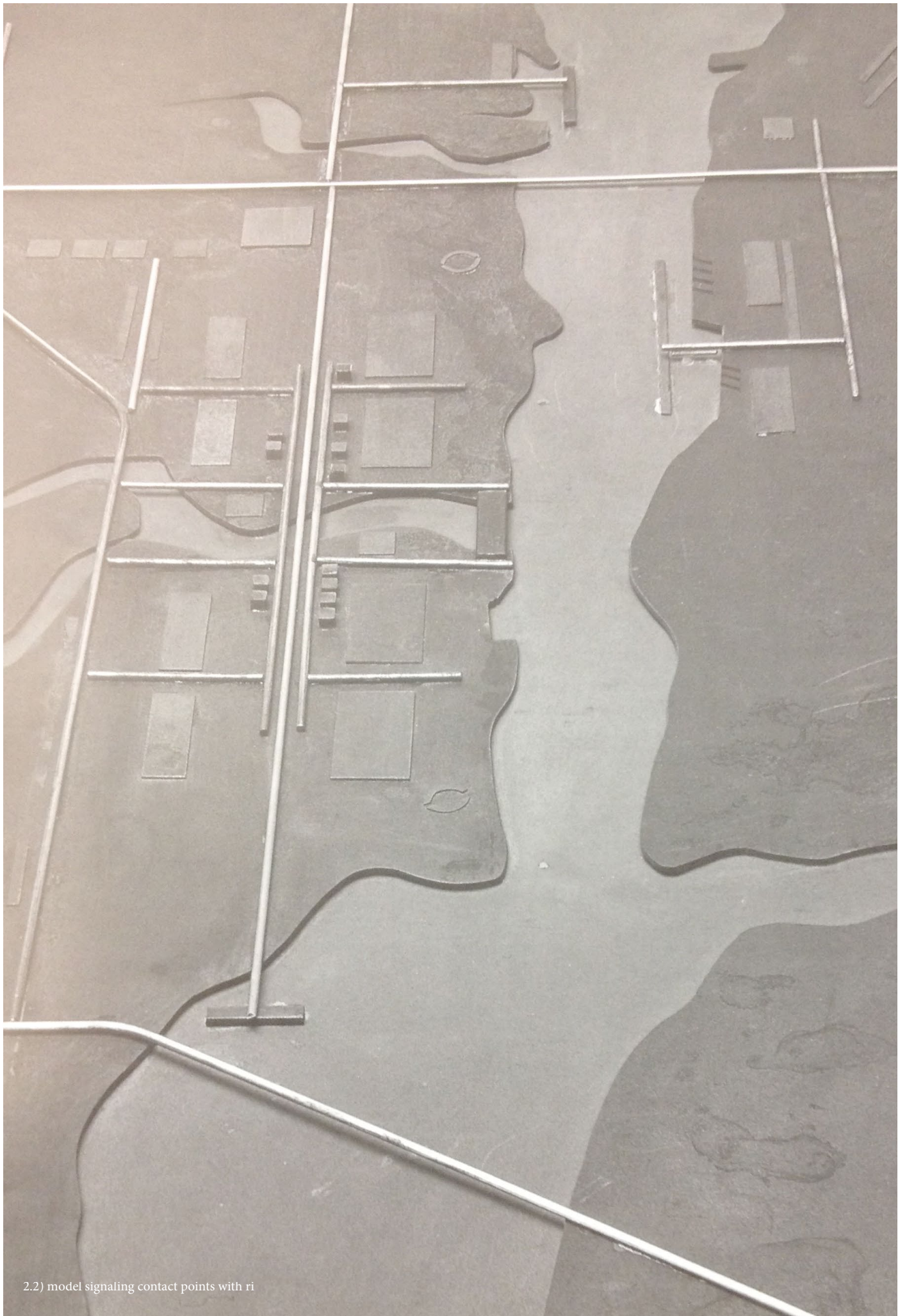
The objective was to engineer the development of the region by an intermodal system of cargo transport that could move things in and out of Brazil's hinterland. "A system that simultaneously promoted river transit creating an internal continental path, connecting, on a large scale, the whole of South America -

from the Amazon to the River Plate Basin." 250 miles from the city of São Paulo, this city was the result of a dam system of locks became accessible for navigation.

The project proposes a city that would be sited on the river, on a specific point where its course rests in the middle of a 40-mile vector between the railroad to Bolivia and the SP-320 highway. "Where they connect, crossing the river lengthwise, the city arises: a river port and center

of regional development. This contrasts with the 'city necklace' model that was established around the railroad tracks and highways."

The buildings rise above the level of the river, not only with the purpose of allowing the water flow but by incorporating it to the intrinsic dynamics of the place. where it is possible to perform open air competitions all year around without the need of a contained atmosphere." Hence



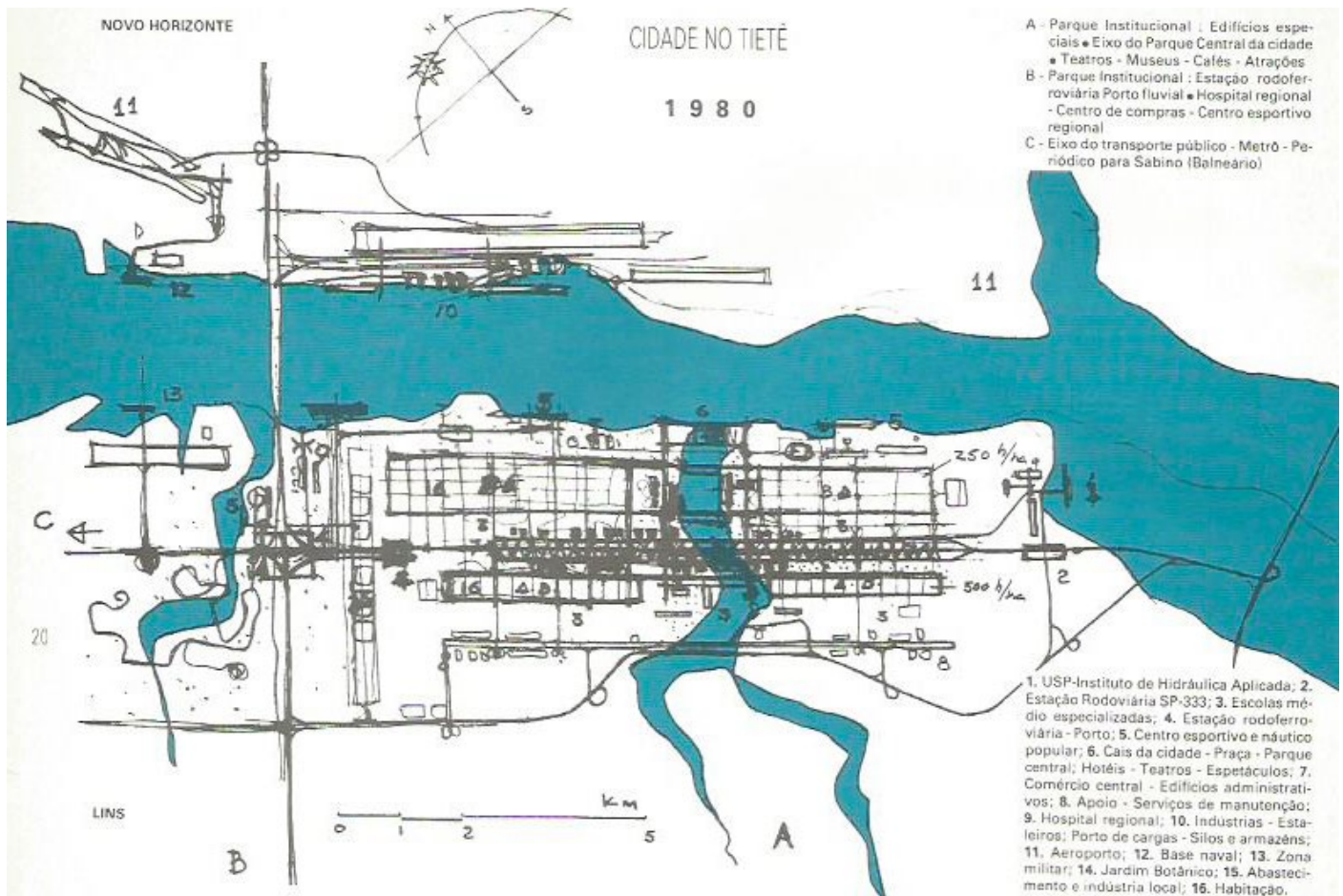
2.2) model signaling contact points with ri

# “The side of the city facing the water opens to public gardens, playgrounds, and sports center”

a landscape for swimming instead of a building with pools.

Considering that the new aquatic center would be used for future swimming competitions as well as a public building in all its extent, the project distributes the program throughout the site as a garden that connects the four pools. With special attention to the gradients required to articulate spaces

that have clear divisions of public-private, wet-dry, performer-spectator, the garden sets a threshold that articulates the program into one landscape where the multiple spaces either emerge from it. “A flooded landscape planted with species typical of tropical wetlands provides separation of private and public spaces that otherwise would have ended up been vertical partitions.”



2.3) building above river.